

## 9.0 ENHANCEMENT LIST

### General

- IBM i / Windows / Cloud options
- Entry level systems available
- Simple pricing (purchase or subscription)
- No user charges or add-on modules
- Installation and training provided by RVI



### Capture

- Capture system included (Kofax VRS prerequisite)
- Direct / batch / remote / mobile capture capabilities
- Scanners / Multi-Function Devices / Signature Pads supported
- TWAIN scanning no longer requires RVI Windows viewer
- Customized Scan Profiles to automate capture process
- Auto Polling of directories for incoming work
- Interfaced capture with application screens / databases
- Barcode recognition supported (Kofax VRS prerequisite)
- Forms recognition capability using Kofax VRS
- File imports no longer require RVI Windows viewer
- Direct imports from Microsoft Outlook / Office (Send-To-RVI)
- Virtual print driver for non-Microsoft applications (Send-To-RVI-PC-Imaging)
- Drag & Drop file imports are also supported
- Interfaces with advanced OCR capture solutions (secondary products) \*additional charge
- RVI for IBM i includes full-featured spool file system for print / report output

### Technical

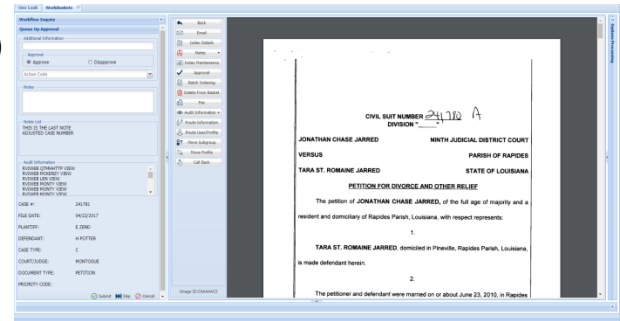
- Supports any emulator (EHLLAPI not required)
- Interfaces to Windows / Web / Cloud / IBM i applications
- Direct programming or screen-scrape interfaces
- No code changes for prior interfaces developed
- Program calls / exits for application integration
- Support for Active Directory
- Support for HTTPS

### Archive

- Flexible storage options (including WORM alternatives) are supported
- HA/DR option (no license charge / annual support fee only)
- Retention / Expiration / Purge controls
- Multiple security levels provided (including document tabs / groups)
- Audits available as graphical charts (view, print, fax, email, maintenance, scans)

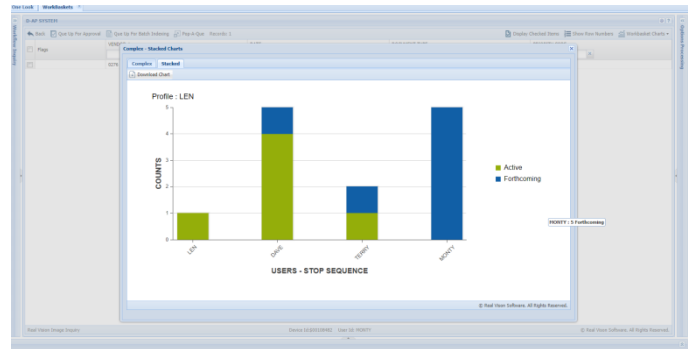
## Access

- Faster performance
- Faster interfaces
- One Look is the newest RVI user interface (GUI look & feel / browser based)
- PDF delivery is the default in preferred browser
- Queued-up documents can be displayed individually or as a combined PDF
- Documents can be viewed / emailed / printed / downloaded
- Thumbnail views are available from the Grid List (sub file listing)
- Grid Lists have no size limits and can be exported to a spreadsheet
- Temporary Grid List for documents selected by users custom list
- Users can Link to documents in other RVI systems
- Mobile Apps are available for Apple / Android devices \*no additional charge
- Document Versions / Redactions are supported



## Workflow

- Workbaskets for individuals / groups (mobile access is available)
- Notification messages / receipt acknowledgement for work items
- Routing Profiles / User Stop Rules / Priority Codes are supported
- Individual users can sub-divide workbaskets / queues
- Pop-A-Queue available for shared workbaskets / queues
- Supervisors can monitor all workbaskets
- Approval system is included (Reason Codes / Explanations)
- Work items can be moved / skipped / reassigned
- Callback Reminders / Overdue Notifications can be defined
- Check-Out / Check-In capability
- Document grouping (electronic stapling / packages)
- eSignature Stamping is supported
- Detailed Audits are available for workflow activity charts



*These are just a few of the enhancements you can be taking advantage of today*

**TO UPGRADE TO 9.0 CONTACT:**

**JOHN PAUL ROUNDTREE 318-855-0283**

**JOHNPAL@REALVISIONSOFTWARE.COM**